

TOOTH PASTE







Colgate
Fluoride Toothpaste

WHITER TEETH IN 14 DAYS!

**ADVANCED
WHITE**
WITH MICRO-CLEANSING
CRYSTALS

Colgate
Pastă de dinți cu Fluor

DINȚI MAI ALBI ÎN 14 ZILE!

**ADVANCED
WHITE**
CU MICRO CRISTALE DE
CURĂȚARE

FORMULĂ
NOUĂ

TOOTH PASTE

- Tooth pastes are suspensions of polishing agents and detergent in a suitable binder.
- It polishes the surface of teeth by rubbing with a tooth brush.



Ingredients

- Dicalcium phosphate - Polishing agent
- Sodium lauryl sulphate - Foaming Agent
- Gum - Binding agent
- Menthol, Thymol, - Flavoring agent
- sugar or Saccharin - Sweetening agent
- Methyl-p-hydroxy benzoate - preservative
- Glycerol - Humectants

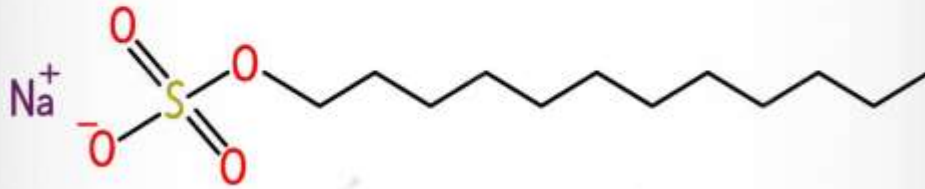
to prevent drying of paste

Dicalcium phosphate

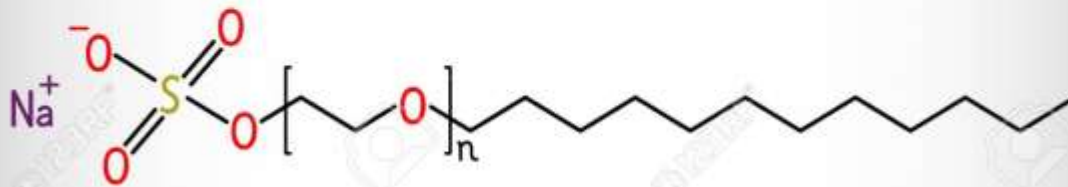


Sodium lauryl sulphate

Sodium lauryl sulfate (SLS)



Sodium laureth sulfate (SLES)

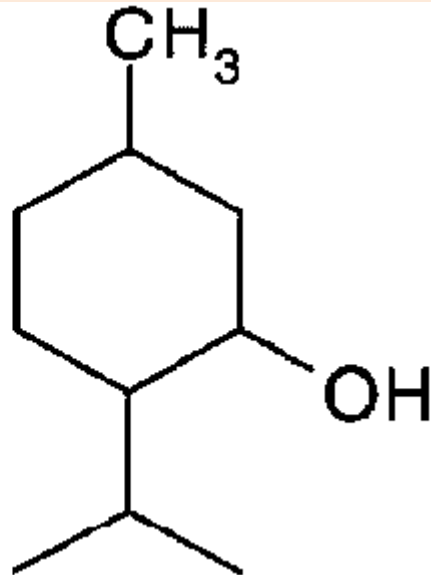


Gum

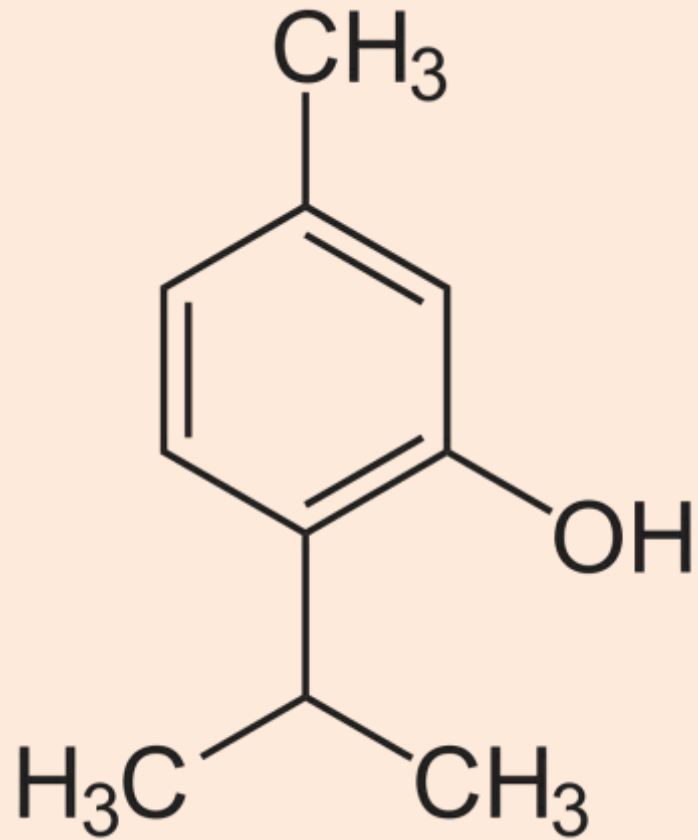


Menthol,

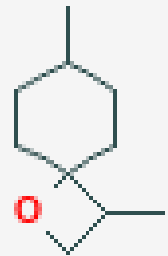
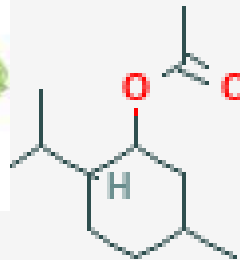
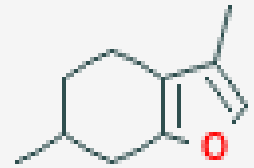
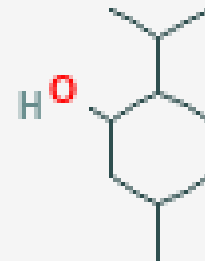
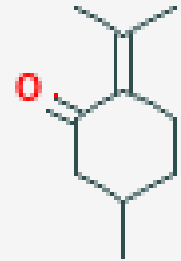
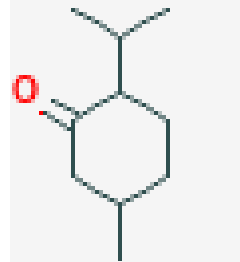
Menthol



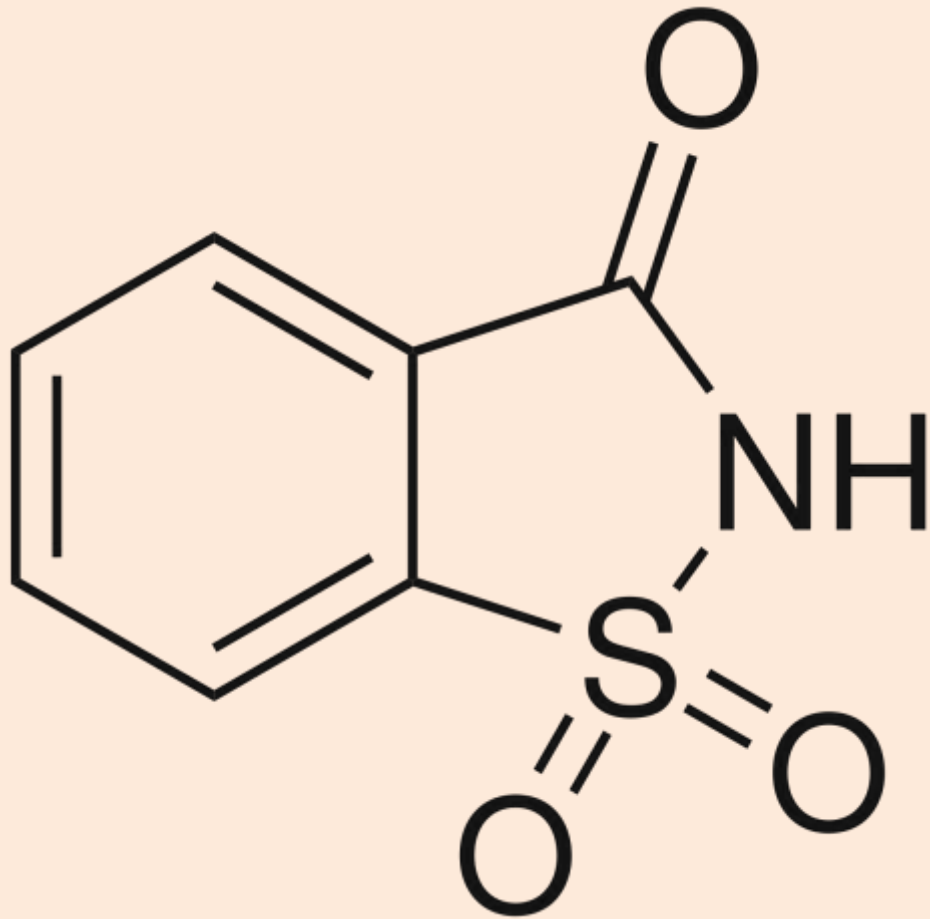
Thymol



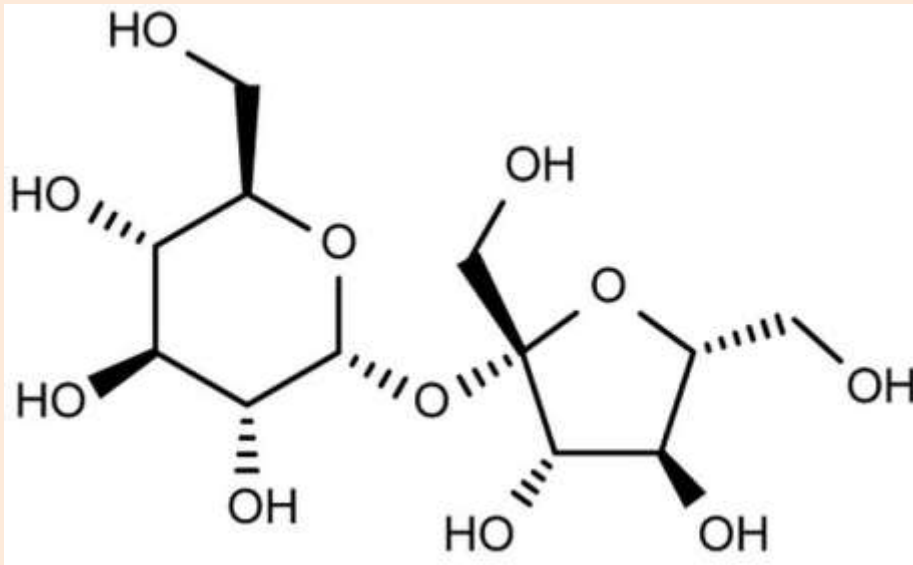
Peppermint oil



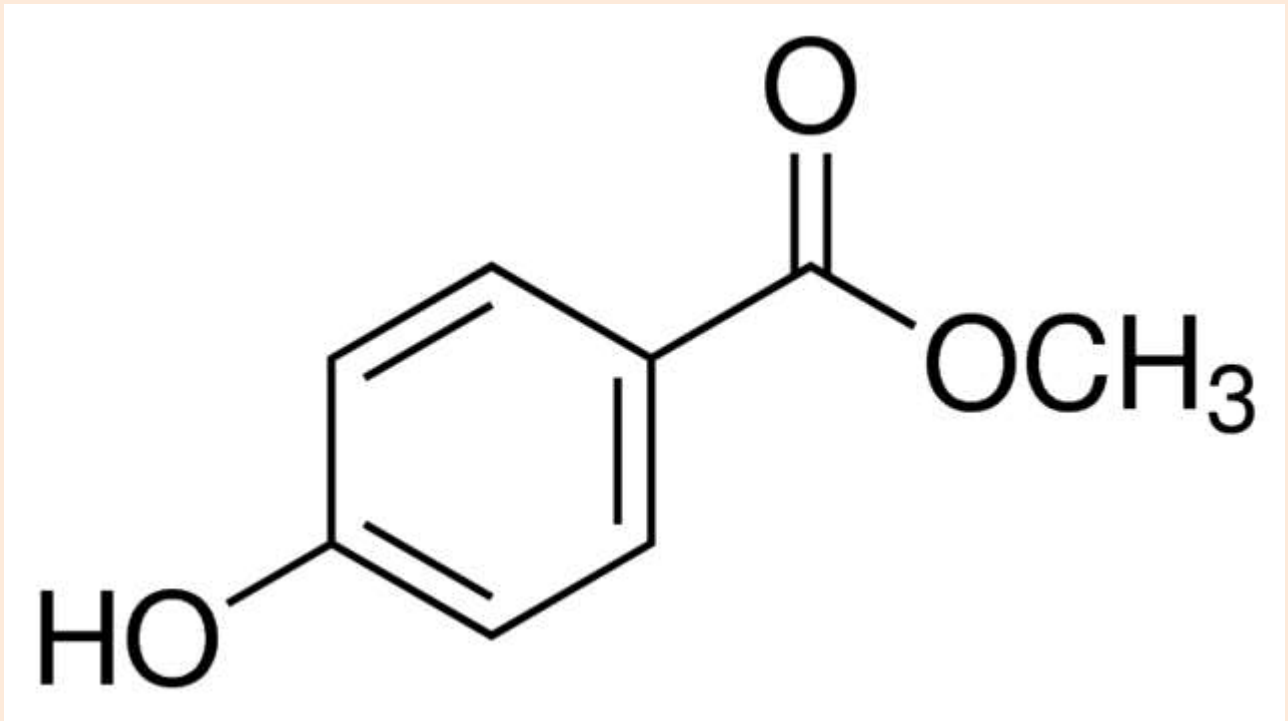
Saccharin



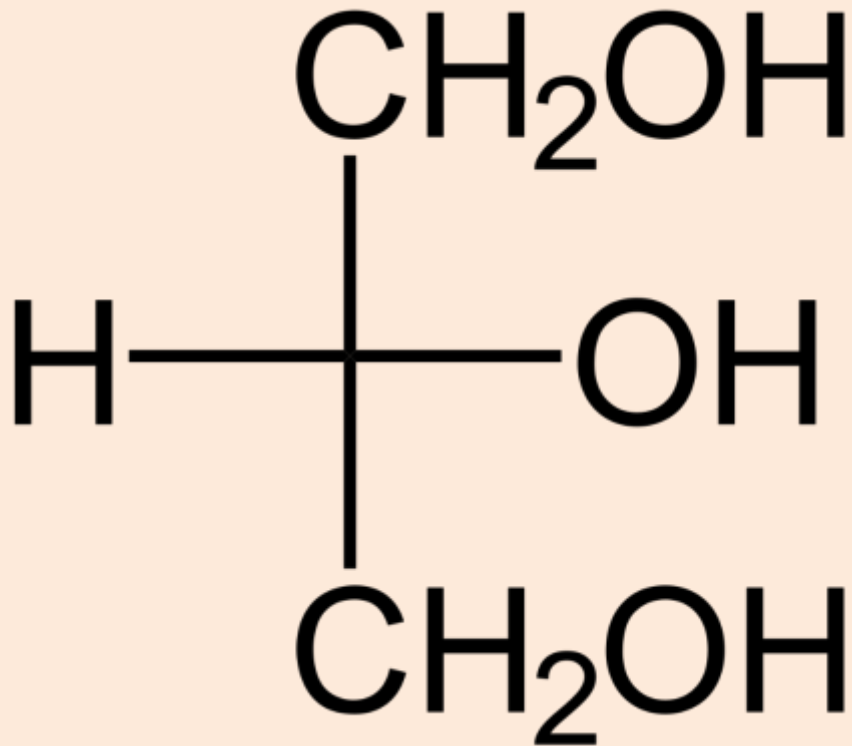
sugar



Methyl-p-hydroxy benzoate



Glycerol



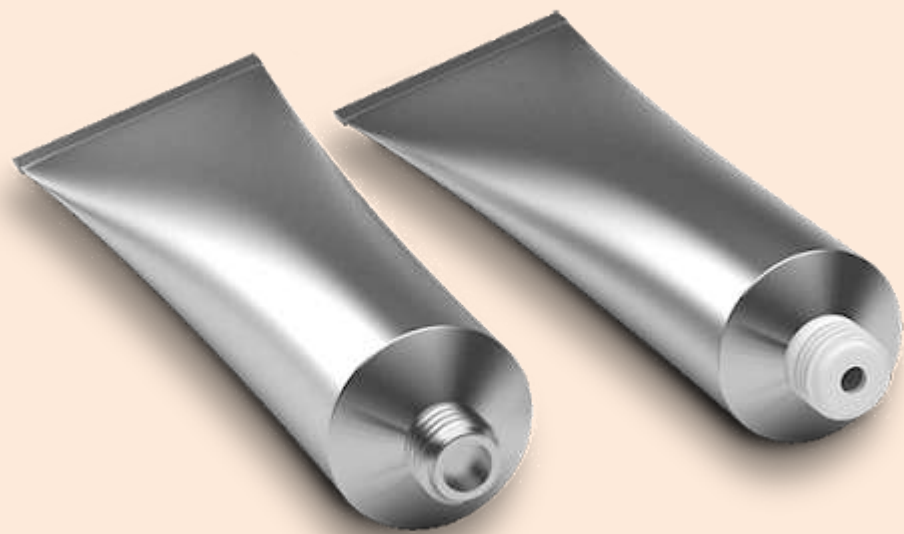
METHOD OF PREPARATION

- All the ingredients except the flavoring agents are mixed thoroughly in **proper proportion** in an enamele

- Menthol and thymol are separately powdered and mixed to form a liquid



- Finally the peppermint oil is added and the powder is treated with the require amount of water and stirred well
- The resulting paste is packed in flexible aluminium or plastic tubes.



T H E
E N D

Three 3D cubes are arranged in a row on a white surface. Each cube has a white face with a black border. The top faces of the cubes display the letters 'T', 'H', and 'E' in black, bold, sans-serif font. The front faces display the letters 'E', 'N', and 'D' in red, bold, sans-serif font. The cubes are slightly offset from each other, creating a sense of depth. A faint watermark 'dreamstime.' is visible across the middle of the cubes.